



**THE SCHOOL BOARD OF BROWARD COUNTY, FLORIDA  
2016-2017 ORGANIZATIONAL CHART**

**PROPOSED**



# THE SCHOOL BOARD OF BROWARD COUNTY, FLORIDA

## 2016-2017 ORGANIZATIONAL CHART

<b>School Board Appointed Committees &amp; Public Stakeholders</b>	<b>1</b>
<b>Superintendent of Schools/General Counsel</b>	<b>2</b>
<b>Chief School Performance &amp; Accountability Officer</b>	<b>3</b>
<b>Chief Academic Officer</b>	<b>4-7</b>
<b>Early Learning &amp; Language Acquisition</b>	<b>4</b>
<b>Exceptional Student Education &amp; Support</b>	<b>5</b>
<b>Instruction &amp; Interventions</b>	<b>6</b>
<b>Student Support Initiatives</b>	<b>7</b>
<b>Chief Auditor</b>	<b>8</b>
<b>Chief Facilities Officer</b>	<b>9</b>
<b>Chief Financial Officer</b>	<b>10</b>
<b>Chief Human Resources &amp; Equity Officer</b>	<b>11</b>
<b>Chief Information Officer</b>	<b>12</b>
<b>Chief Portfolio Services Officer</b>	<b>13</b>
<b>Chief Public Information Officer</b>	<b>14</b>
<b>Chief of Staff</b>	<b>15</b>
<b>Chief Strategy &amp; Operations Officer</b>	<b>16-17</b>
<b>Broward Education Foundation, Business Support Center, Grants Administration, Strategic Implementation &amp; Accountability</b>	<b>16</b>
<b>Food &amp; Nutrition Services, Procurement &amp; Warehousing Services, Student Transportation &amp; Fleet Services</b>	<b>17</b>



**SCHOOL BOARD APPOINTED COMMITTEES & PUBLIC STAKEHOLDERS**

**THE SCHOOL BOARD OF BROWARD COUNTY, FL  
2016-2017 ORGANIZATIONAL CHART  
PROPOSED**

**Legend**

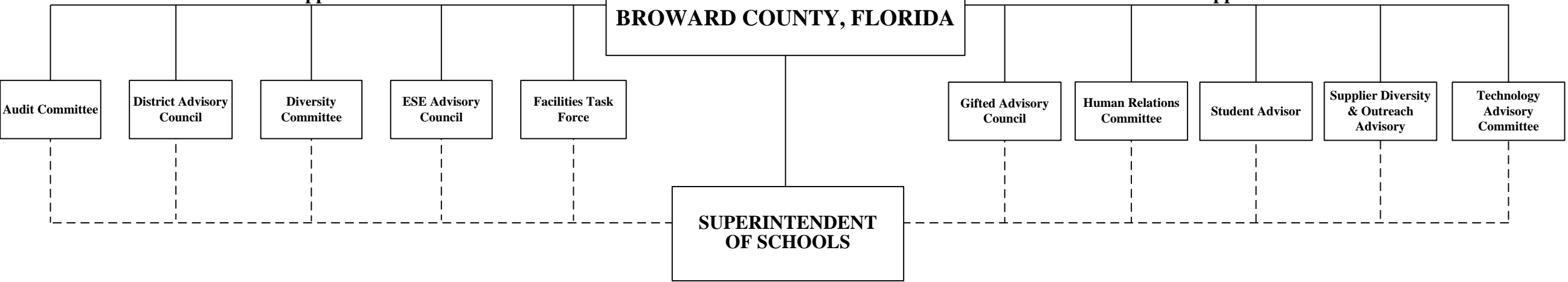
Funding from sources other than General Funds	New Position Job Description Exists <b>N</b>	Reporting Change from Different Division <b>R</b>
New Position Job Description Does Not Exist <b>N</b> ✓	Job Study on Existing Position <b>J</b>	Alignment Change within same Division <b>A</b>
Revision to Existing Job Description/Title Change ✓	Funding: <b>C</b> Capital <b>FS</b> Food Service <u>Direct Report</u> <b>G</b> General <b>Gr</b> Grant <u>Indirect Report</u>	

**BROWARD COUNTY  
COMMUNITY**

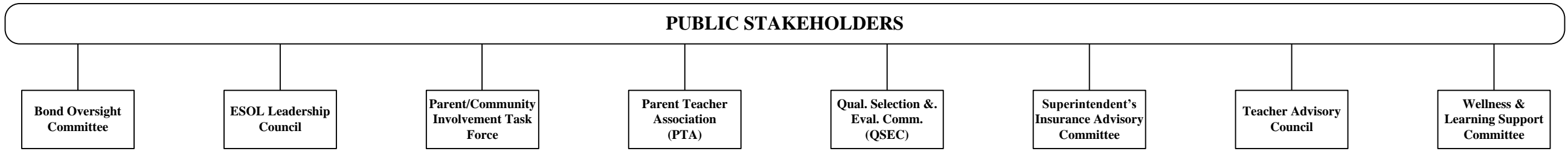
**THE SCHOOL BOARD OF  
BROWARD COUNTY, FLORIDA**

**School Board Appointed Committees**

**School Board Appointed Committees**



**PUBLIC STAKEHOLDERS**



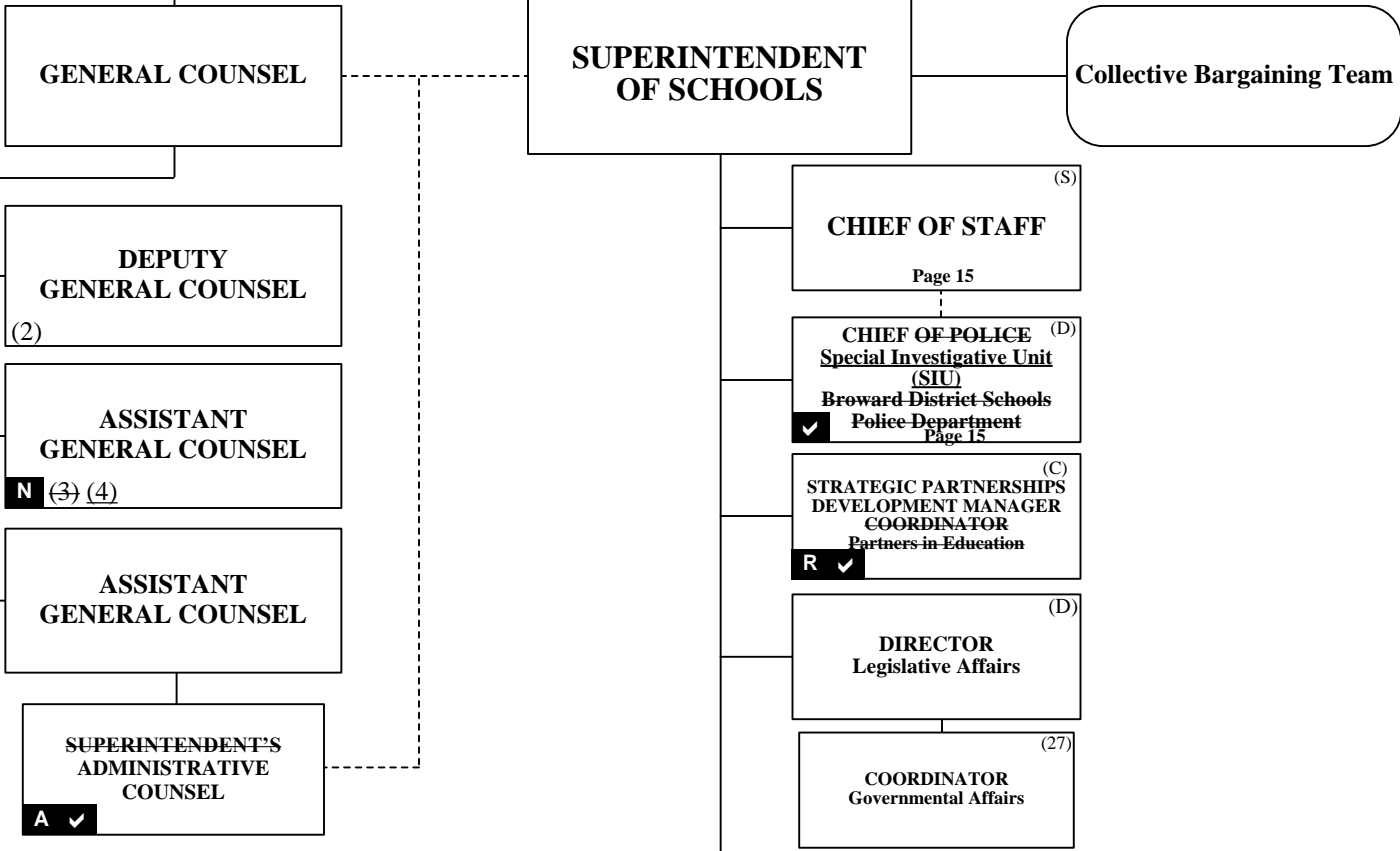


**THE SCHOOL BOARD OF BROWARD COUNTY, FL  
2016-2017 ORGANIZATIONAL CHART  
PROPOSED**

**SUPERINTENDENT/GENERAL COUNSEL**

**BROWARD COUNTY  
COMMUNITY**

**THE SCHOOL BOARD OF  
BROWARD COUNTY, FLORIDA**



**Legend**

Funding from sources other than General Funds	New Position Job Description Exists <b>N</b>	Reporting Change from Different Division <b>R</b>
New Position Job Description Does Not Exist <b>N</b> ✓	Job Study on Existing Position <b>J</b>	Alignment Change within same Division <b>A</b>
Revision to Existing Job Description/Title Change ✓	Funding: <b>C</b> Capital <b>FS</b> Food Service <b>DR</b> Direct Report <b>G</b> General <b>Gr</b> Grant <b>IR</b> Indirect Report	

- CHIEF SCHOOL PERFORMANCE & ACCOUNTABILITY OFFICER**  
Page 3
- CHIEF ACADEMIC OFFICER**  
Pages 4-7
- CHIEF AUDITOR**  
Page 8
- CHIEF FACILITIES OFFICER**  
Page 9
- CHIEF FINANCIAL OFFICER**  
Page 10
- CHIEF HUMAN RESOURCES & EQUITY OFFICER**  
Page 11
- CHIEF INFORMATION OFFICER**  
Page 12
- CHIEF PORTFOLIO SERVICES OFFICER**  
Page 13
- CHIEF PUBLIC INFORMATION OFFICER**  
Page 14
- CHIEF STRATEGY & OPERATIONS OFFICER**  
Pages 16-17
- ~~**CHIEF TALENT DEVELOPMENT OFFICER**  
Page 18~~



**THE SCHOOL BOARD OF BROWARD COUNTY, FL**  
**2016-2017 ORGANIZATIONAL CHART**  
**PROPOSED**

**SCHOOL PERFORMANCE & ACCOUNTABILITY**  
**OSPA**

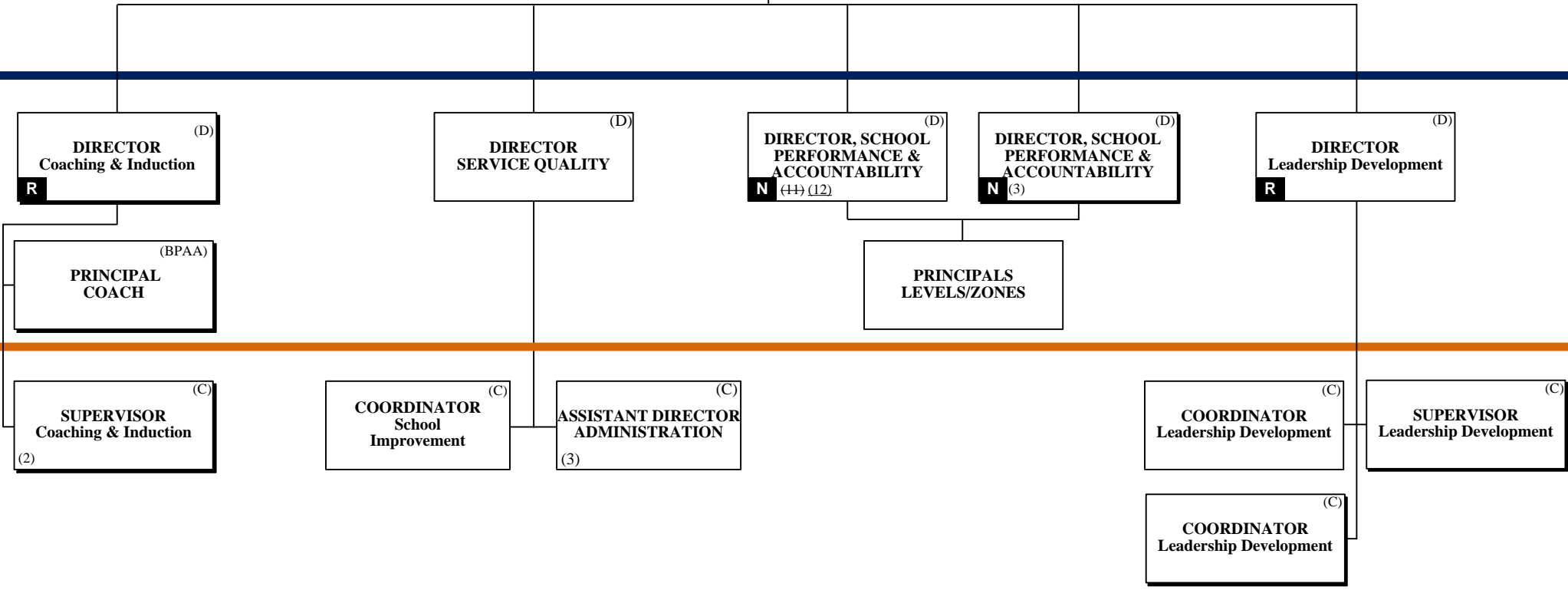
THE SCHOOL BOARD OF BROWARD COUNTY, FLORIDA

**Legend**

Funding from sources other than General Funds	New Position Job Description Exists <b>N</b>	Reporting Change from Different Division <b>R</b>
New Position Job Description Does Not Exist <b>N</b> ✓	Job Study on Existing Position 	Alignment Change within same Division <b>A</b>
Revision to Existing Job Description/Title Change ✓	Funding: <b>C</b> Capital <b>FS</b> Food Service <u>Direct Report</u> <b>G</b> General <b>Gr</b> Grant <u>Indirect Report</u>	

SUPERINTENDENT OF SCHOOLS

CHIEF SCHOOL PERFORMANCE & ACCOUNTABILITY OFFICER <sup>(S)</sup>



PAY BANDS 'S' & 'E'

PAY BAND 'D'

PAY BANDS 'C' & 'B'



# ACADEMICS EARLY LEARNING & LANGUAGE ACQUISITION

**THE SCHOOL BOARD OF BROWARD COUNTY, FL  
2016-2017 ORGANIZATIONAL CHART  
PROPOSED**

**Legend**

Funding from sources other than General Funds	New Position Job Description Exists <b>N</b>	Reporting Change from Different Division <b>R</b>
New Position Job Description Does Not Exist <b>N</b> ✓	Job Study on Existing Position <b>J</b>	Alignment Change within same Division <b>A</b>
Revision to Existing Job Description/Title Change ✓	Funding: <b>C</b> Capital <b>FS</b> Food Service <u>Direct Report</u> <b>G</b> General <b>Gr</b> Grant <u>Indirect Report</u>	

THE SCHOOL BOARD OF BROWARD COUNTY, FLORIDA

SUPERINTENDENT OF SCHOOLS

CHIEF ACADEMIC OFFICER (S)

EXECUTIVE DIRECTOR  
Early Learning & Language Acquisition /School-Readiness  
G-30% Gr-70% (D) (E) ✓

PAY BANDS 'S' & 'E'

DIRECTOR  
Pre-Kindergarten Programs  
Head Start/Early Intervention  
G-10% Gr-90% (D) A ✓

DIRECTOR  
Bilingual/ESOL  
(D) A

DIRECTOR  
Literacy  
G-30% Gr-70% (D) A

PAY BAND 'D'

CURRICULUM SUPERVISOR  
Head Start/Early Head Start  
(C) A ✓

CURRICULUM SUPERVISOR  
VPK Programs  
(C)

SUPERVISOR  
Head Start Family Services  
(C)

SPECIALIST  
Head Start/Early Head Start  
(B)

CURRICULUM SUPERVISOR  
Bilingual/ESOL  
G-27% Gr-73% (C)

EDUCATION SPECIALIST I  
Dual Language/World Language  
(25)

SPECIALIST  
Bilingual Outreach Program  
(25)

CURRICULUM SUPERVISOR  
World Languages  
(C)

RESEARCH SPECIALIST  
G-50% Gr-50% (27)

EDUCATION SPECIALIST I  
ESOL/Foreign Language  
(25)  
(2)

CURRICULUM SUPERVISOR  
School Readiness  
A (2)

CURRICULUM SUPERVISOR  
School Readiness  
A (C)

PAY BANDS 'C' & 'B'

# ACADEMICS EXCEPTIONAL STUDENT EDUCATION & SUPPORT



**THE SCHOOL BOARD OF BROWARD COUNTY, FL  
2016-2017 ORGANIZATIONAL CHART  
PROPOSED**

**Legend**

Funding from sources other than General Funds	New Position Job Description Exists <b>N</b>	Reporting Change from Different Division <b>R</b>
New Position Job Description Does Not Exist <b>N</b> ✓	Job Study on Existing Position <b>J</b>	Alignment Change within same Division <b>A</b>
Revision to Existing Job Description/Title Change ✓	<b>Funding:</b> <b>C</b> Capital <b>FS</b> Food Service <u>Direct Report</u> <b>G</b> General <b>Gr</b> Grant <u>Indirect Report</u>	

**THE SCHOOL BOARD OF BROWARD COUNTY, FLORIDA**

**SUPERINTENDENT OF SCHOOLS**

**CHIEF ACADEMIC OFFICER** <sup>(S)</sup>

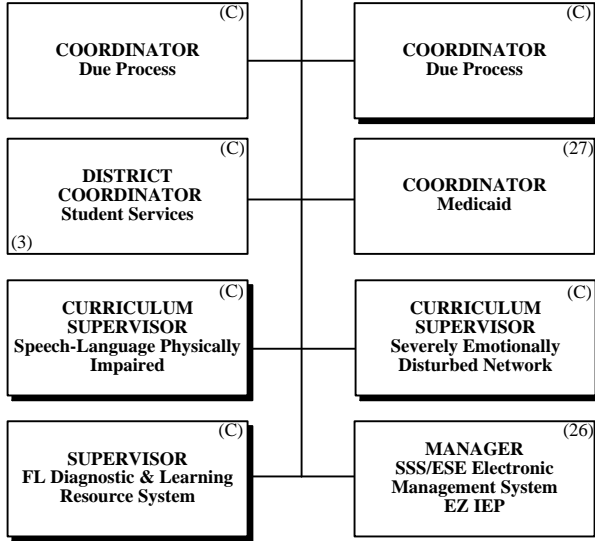
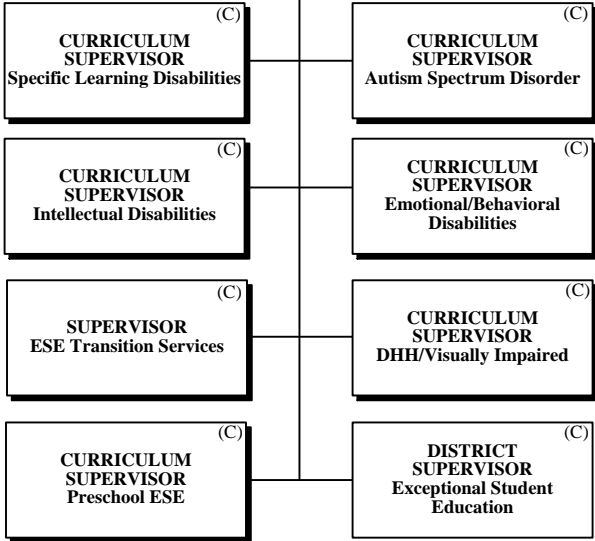
**EXECUTIVE DIRECTOR** <sup>(E)</sup>  
Exceptional Student Education & Support

PAY BANDS 'S' & 'E'

**DIRECTOR** <sup>(D)</sup>  
Exceptional Student Education

**DIRECTOR** <sup>(D)</sup>  
Support Services

PAY BAND 'D'



PAY BANDS 'C' & 'B'

# ACADEMICS INSTRUCTION & INTERVENTIONS



## THE SCHOOL BOARD OF BROWARD COUNTY, FL 2016-2017 ORGANIZATIONAL CHART **PROPOSED**

THE SCHOOL BOARD OF BROWARD COUNTY, FLORIDA

SUPERINTENDENT OF SCHOOLS

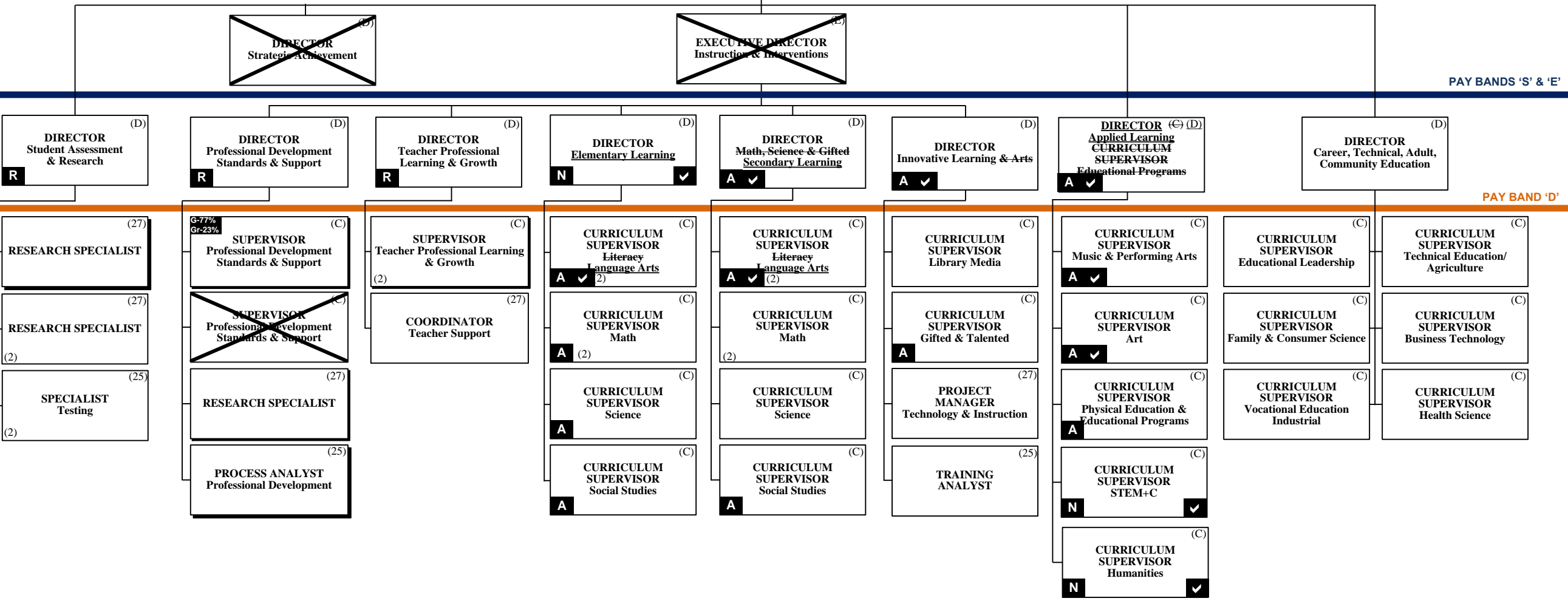
CHIEF ACADEMIC OFFICER (S)

~~DIRECTOR Strategic Achievement (D)~~

~~EXECUTIVE DIRECTOR Instruction & Interventions (D)~~

**Legend**

Funding from sources other than General Funds <b>N</b>	New Position Job Description Exists <b>N</b>	Reporting Change from Different Division <b>R</b>
New Position Job Description Does Not Exist <b>N</b> ✓	Job Study on Existing Position <b>A</b>	Alignment Change within same Division <b>A</b>
Revision to Existing Job Description/Title Change ✓	Funding: <b>C</b> Capital <b>FS</b> Food Service    Direct Report <b>G</b> General <b>Gr</b> Grant    Indirect Report	





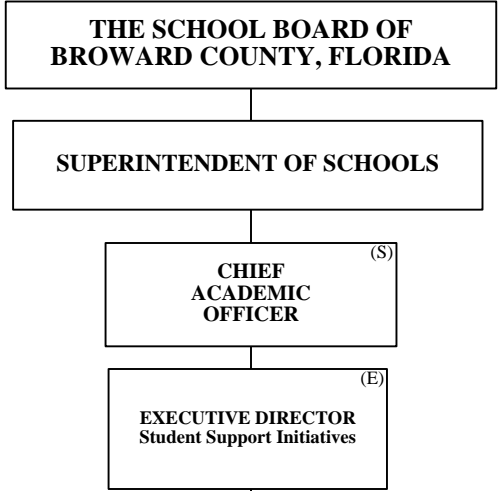


**THE SCHOOL BOARD OF BROWARD COUNTY, FL  
2016-2017 ORGANIZATIONAL CHART  
PROPOSED**

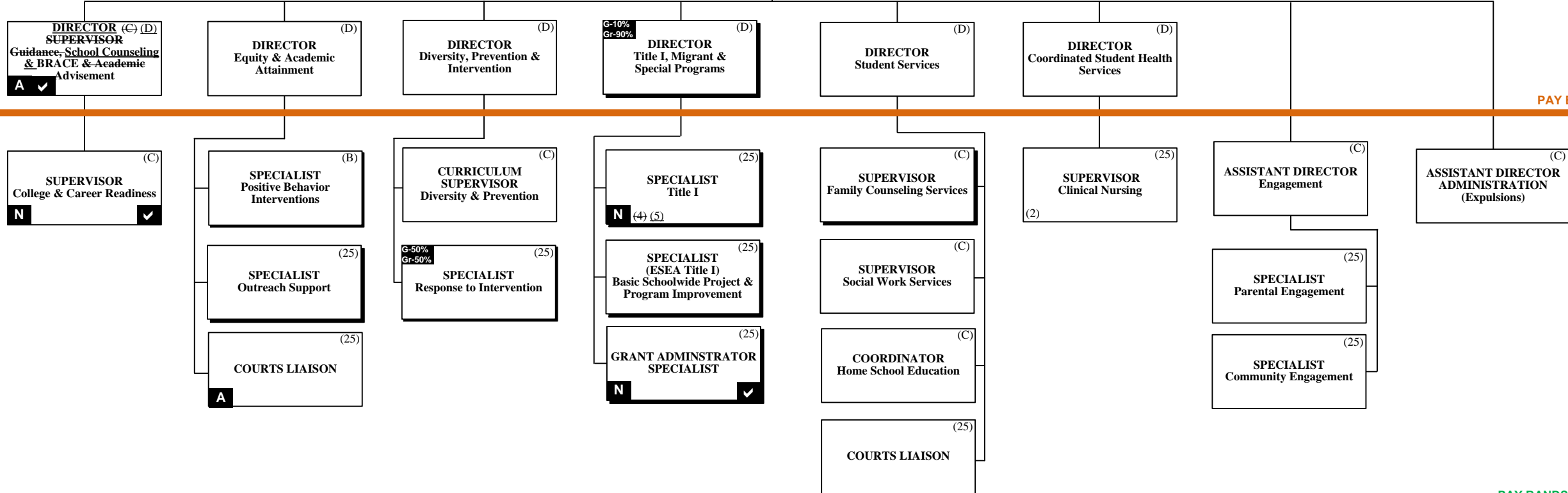
**ACADEMICS  
STUDENT SUPPORT INITIATIVES**

**Legend**

Funding from sources other than General Funds <b>N</b>	New Position Job Description Exists <b>N</b>	Reporting Change from Different Division <b>R</b>
New Position Job Description Does Not Exist <b>N</b> ✓	Job Study on Existing Position <b>N</b>	Alignment Change within same Division <b>A</b>
Revision to Existing Job Description/Title Change ✓	Funding: <b>C</b> Capital <b>FS</b> Food Service <u>Direct Report</u> <b>G</b> General <b>Gr</b> Grant <u>Indirect Report</u>	



PAY BANDS 'S' & 'E'



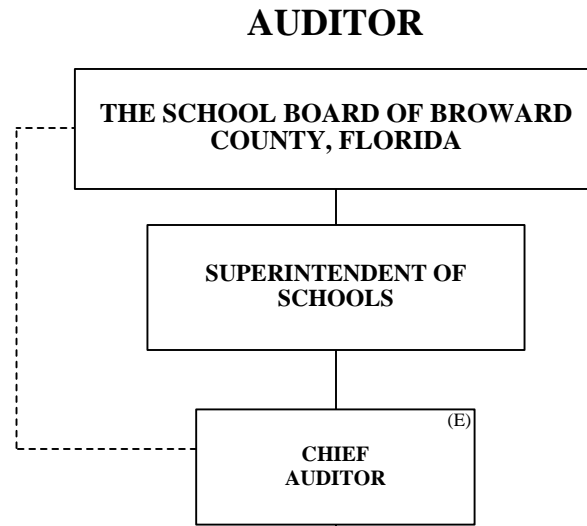
PAY BAND 'D'

PAY BANDS 'C' & 'B'



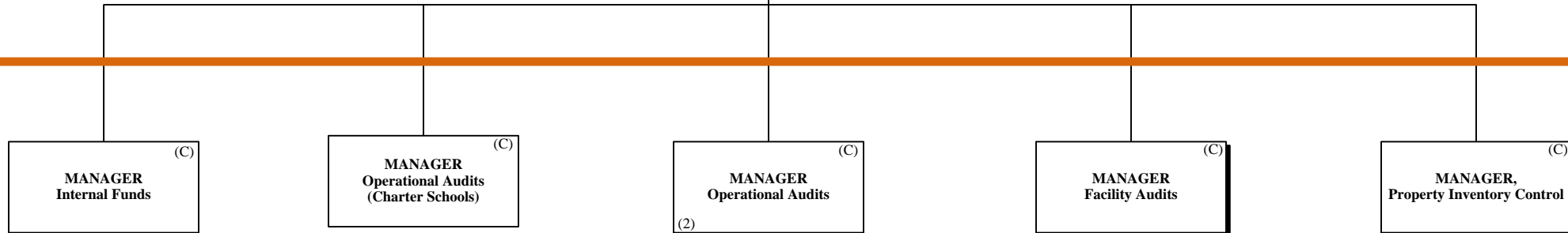
**THE SCHOOL BOARD OF BROWARD COUNTY, FL  
2016-2017 ORGANIZATIONAL CHART  
PROPOSED**

Legend		
Funding from sources other than General Funds <b>N</b>	New Position Job Description Exists <b>N</b>	Reporting Change from Different Division <b>R</b>
New Position Job Description Does Not Exist <b>N</b> ✓	Job Study on Existing Position <b>N</b>	Alignment Change within same Division <b>A</b>
Revision to Existing Job Description/Title Change ✓	Funding: <b>C</b> Capital <b>FS</b> Food Service <u>Direct Report</u> <b>G</b> General <b>Gr</b> Grant <u>Indirect Report</u>	



PAY BANDS 'S' & 'E'

PAY BAND 'D'



PAY BANDS 'C' & 'B'

**Legend**

Funding from sources other than General Funds	New Position Job Description Exists <b>N</b>	Reporting Change from Different Division <b>R</b>
New Position Job Description Does Not Exist <b>N</b> ✓	Job Study on Existing Position <b>A</b>	Alignment Change within same Division <b>A</b>
Revision to Existing Job Description/Title Change ✓	Funding: <b>C</b> Capital <b>FS</b> Food Service   Direct Report <b>G</b> General <b>Gr</b> Grant   Indirect Report	

# FACILITIES

THE SCHOOL BOARD OF BROWARD COUNTY, FLORIDA



THE SCHOOL BOARD OF BROWARD COUNTY, FL  
2016-2017 ORGANIZATIONAL CHART

**PROPOSED**

SUPERINTENDENT OF SCHOOLS

CHIEF FACILITIES OFFICER (S)

EXECUTIVE DIRECTOR  
Capital Programs & PPO (E)

PAY BANDS 'S' & 'E'

DIRECTOR Pre-Construction (D)

DIRECTOR Construction (D)

DIRECTOR Program Controls (D)

DIRECTOR Physical Plant Operations (D)  
C-70% G-30%  
**A**

DIRECTOR Environmental Health & Safety (D)

CHIEF FIRE OFFICIAL (D)

DIRECTOR COORDINATOR Business Process & Performance Improvement (B) (D)  
**A** ✓

PAY BAND 'D'

MANAGER Mechanical Engineering (C)

MANAGER Construction (C)

MANAGER Construction (C)

MANAGER Contract Administration (27)

MANAGER Facilities Support Services (C)

AREA MANAGER Trades Zone 1 (C)

MANAGER PPO Finance (C)  
**N** ✓

MANAGER Environmental Conservation/Utility Management (27)

COORDINATOR Local Education Agency (LEA) (C)

PLANS EXAMINER/INSPECTOR Fire (25)  
(3)

MANAGER Architectural Engineering (C)

PROJECT MANAGER III (27)

PROJECT MANAGER III (27)

MANAGER Database Administration (27)

SUPERVISOR Work Flow/Labor Utilization (25)  
C-55% G-45%

AREA MANAGER Trades Zone 2 (C)  
C-70% G-30%

MANAGER Custodial/Grounds (C)  
C-55% G-45%

SPECIALIST IV Building Control (25)

PROJECT MANAGER Occupational Health/Environmental Control (25)

MANAGER Electrical Engineering (C)

MANAGER Commissioning (C)

PROJECT MANAGER III (27)

MANAGER Database Administration (27)

SUPERVISOR Planning & Scheduling (25)  
C-55% G-45%

AREA MANAGER Trades Zone 3 (C)  
C-70% G-30%

MANAGER Grounds (26)  
C-55% G-45%

COORDINATOR Health & Safety (B)

PROJECT MANAGER I (25)

MANAGER ADA Accessibility (C)

MANAGER Commissioning (C)

PROJECT MANAGER III (27)

MANAGER Database Administration (27)

~~PROJECT MANAGER III (27)~~  
(2)

AREA MANAGER Trades District (C)  
C-70% G-30%

MANAGER Grounds (26)  
C-55% G-45%

SPECIALIST Safety Training (25)

SPECIALIST ADA Accessibility (25)

MANAGER Commissioning (C)

PROJECT MANAGER III (27)

MANAGER Database Administration (27)

~~PROJECT MANAGER III (27)~~  
(2)

AREA MANAGER Trades District (C)  
C-70% G-30%

MANAGER Grounds (26)  
C-55% G-45%

SPECIALIST Safety Training (25)

TRADE SUPERVISOR (25)  
(9)

ESMAB PAY BANDS 'C' & 'B'  
TSP PAY GRADES 25-28



**THE SCHOOL BOARD OF BROWARD COUNTY, FL  
2016-2017 ORGANIZATIONAL CHART  
PROPOSED**

**FINANCIAL MANAGEMENT**

THE SCHOOL BOARD OF BROWARD COUNTY, FLORIDA

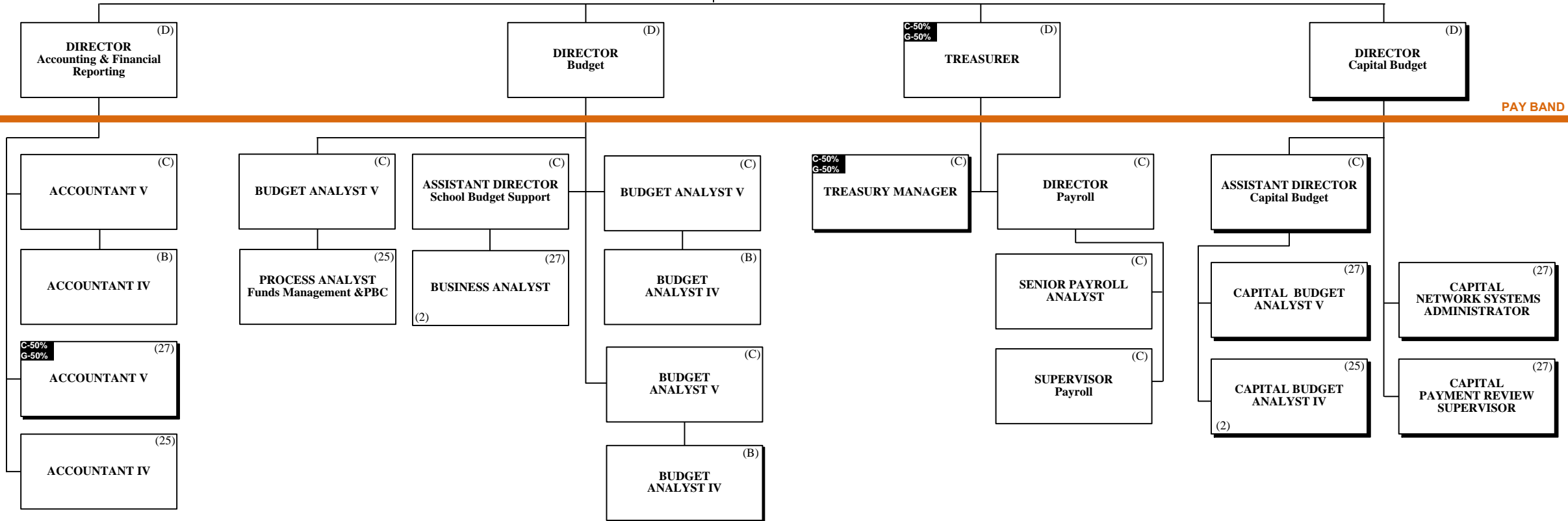
SUPERINTENDENT OF SCHOOLS

C-20%  
G-80%  
**CHIEF FINANCIAL OFFICER (CFO)** (S)

**Legend**

Funding from sources other than General Funds	New Position Job Description Exists <b>N</b>	Reporting Change from Different Division <b>R</b>
New Position Job Description Does Not Exist <b>N</b> ✓	Job Study on Existing Position <b>J</b>	Alignment Change within same Division <b>A</b>
Revision to Existing Job Description/Title Change ✓	Funding: <b>C</b> Capital <b>FS</b> Food Service <u>Direct Report</u> <b>G</b> General <b>Gr</b> Grant <u>Indirect Report</u>	

PAY BANDS 'S' & 'E'



PAY BAND 'D'

ESMAB PAY BANDS 'C' & 'B'  
TSP PAY GRADES 25-28

# HUMAN RESOURCES & EQUITY

THE SCHOOL BOARD OF BROWARD COUNTY, FLORIDA



THE SCHOOL BOARD OF BROWARD COUNTY, FL  
2016-2017 ORGANIZATIONAL CHART

**PROPOSED**

Collective Bargaining

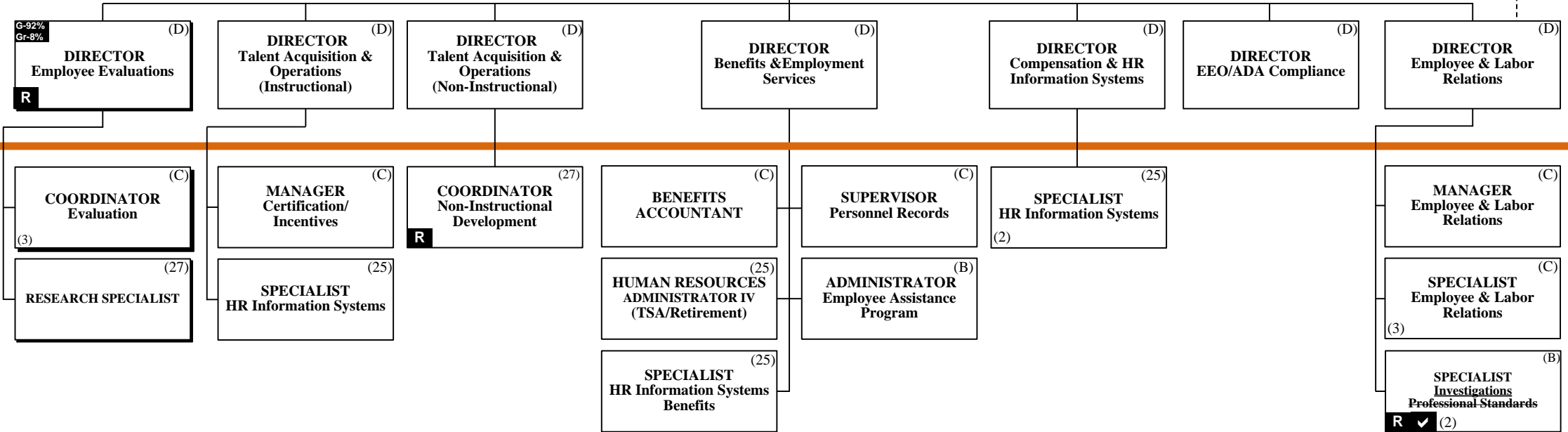
PAY BANDS 'S' & 'E'

**Legend**

Funding from sources other than General Funds <b>N</b>	New Position Job Description Exists <b>N</b>	Reporting Change from Different Division <b>R</b>
New Position Job Description Does Not Exist <b>N</b> ✓	Job Study on Existing Position <b>N</b>	Alignment Change within same Division <b>A</b>
Revision to Existing Job Description/Title Change ✓	Funding: <b>C</b> Capital <b>FS</b> Food Service <u>Direct Report</u> <b>G</b> General <b>Gr</b> Grant <u>Indirect Report</u>	

SUPERINTENDENT OF SCHOOLS

CHIEF HUMAN RESOURCES & EQUITY OFFICER (S)



PAY BAND 'D'

ESMAB PAY BANDS 'C' & 'B'  
TSP/PBA PAY GRADES 25-28



# INFORMATION & TECHNOLOGY

## THE SCHOOL BOARD OF BROWARD COUNTY, FL 2016-2017 ORGANIZATIONAL CHART

**PROPOSED**

**Legend**

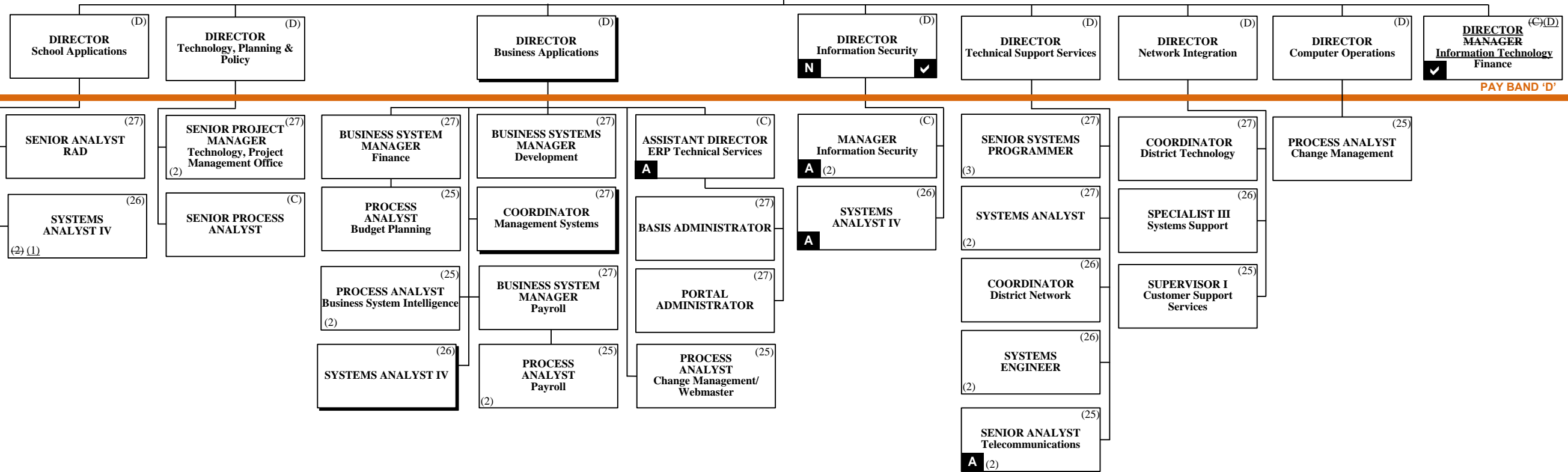
Funding from sources other than General Funds	New Position Job Description Exists <b>N</b>	Reporting Change from Different Division <b>R</b>
New Position Job Description Does Not Exist <b>N</b> ✓	Job Study on Existing Position <b>J</b>	Alignment Change within same Division <b>A</b>
Revision to Existing Job Description/Title Change ✓	Funding: <b>C</b> Capital <b>FS</b> Food Service <u>Direct Report</u> <b>G</b> General <b>Gr</b> Grant <u>Indirect Report</u>	

THE SCHOOL BOARD OF BROWARD COUNTY, FLORIDA

SUPERINTENDENT OF SCHOOLS

CHIEF INFORMATION OFFICER (S)

PAY BANDS 'S' & 'E'



PAY BAND 'D'

ESMAB PAY BANDS 'C' & 'B'  
TSP PAY GRADES 25-28

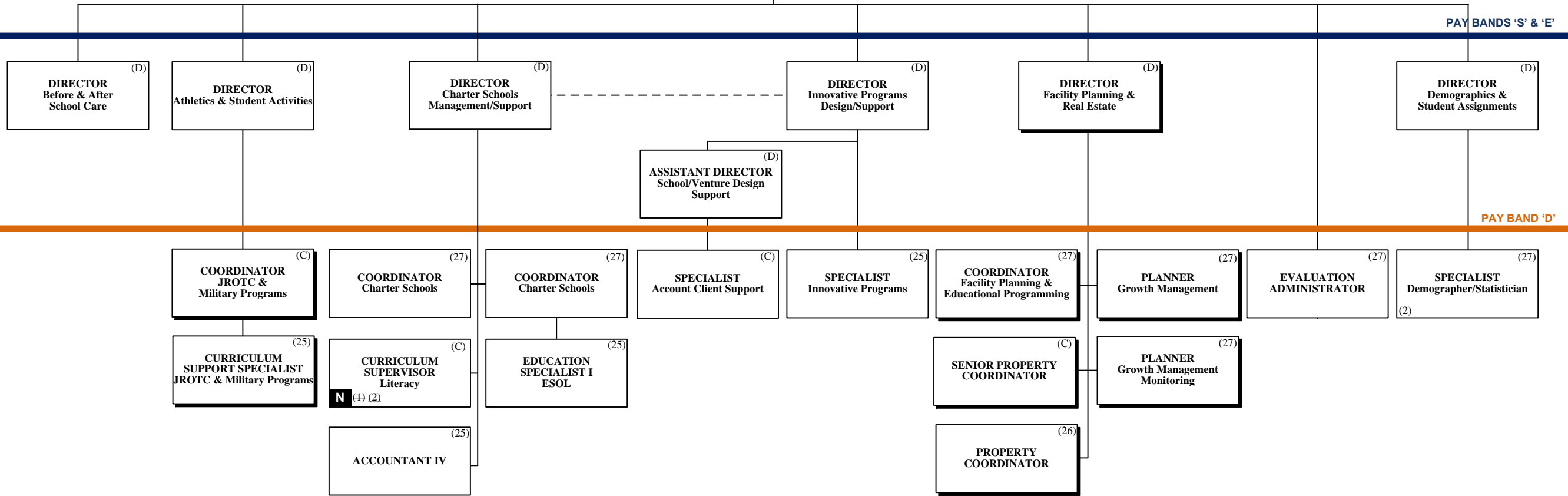
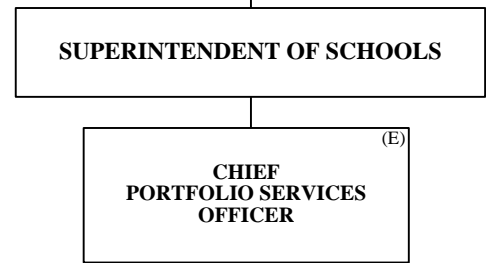


**THE SCHOOL BOARD OF BROWARD COUNTY, FL  
2016-2017 ORGANIZATIONAL CHART  
PROPOSED**

**PORTFOLIO SERVICES  
THE SCHOOL BOARD OF BROWARD COUNTY, FLORIDA**

**Legend**

Funding from sources other than General Funds	New Position Job Description Exists <b>N</b>	Reporting Change from Different Division <b>R</b>
New Position Job Description Does Not Exist <b>N</b> ✓	Job Study on Existing Position <b>J</b>	Alignment Change within same Division <b>A</b>
Revision to Existing Job Description/Title Change ✓	Funding: <b>C</b> Capital <b>FS</b> Food Service <u>Direct Report</u> <b>G</b> General <b>Gr</b> Grant <u>Indirect Report</u>	





**THE SCHOOL BOARD OF BROWARD COUNTY, FL**  
**2016-2017 ORGANIZATIONAL CHART**  
**PROPOSED**

**PUBLIC INFORMATION OFFICER**

THE SCHOOL BOARD OF BROWARD COUNTY, FLORIDA

SUPERINTENDENT OF SCHOOLS

CHIEF PUBLIC INFORMATION OFFICER (E)

DIRECTOR/ GENERAL MANAGER (D)  
 Broward Educational Communication Network (BECON)

DIRECTOR (D)  
 Marketing & Communications

(28)  
 BECON STATION MANAGER

(26)  
 MANAGER II Engineering

(26)  
 MANAGER of GRAPHICS

(27)  
 COORDINATOR District Community Relations

(26)  
 COORDINATOR BECON Public Relations & Fundraising

(26)  
 MANAGER II Production

(25)  
 SPECIALIST Public Affairs (2)

(B)  
 MANAGER Integrated Marketing Communication & Social Media

(B)  
 MANAGER II School Services

(25)  
 CURATOR Old Dillard Museum

**Legend**

Funding from sources other than General Funds	New Position Job Description Exists <b>N</b>	Reporting Change from Different Division <b>R</b>
New Position Job Description Does Not Exist <b>N</b> ✓	Job Study on Existing Position <b>J</b>	Alignment Change within same Division <b>A</b>
Revision to Existing Job Description/Title Change ✓	Funding: <b>C</b> Capital <b>FS</b> Food Service <u>Direct Report</u> <b>G</b> General <b>Gr</b> Grant <u>Indirect Report</u>	

PAY BANDS 'S' & 'E'

PAY BAND 'D'

ESMAB PAY BANDS 'C' & 'B'  
 TSP PAY GRADES 25-28



# CHIEF OF STAFF



THE SCHOOL BOARD OF BROWARD COUNTY, FLORIDA

THE SCHOOL BOARD OF BROWARD COUNTY, FL  
2016-2017 ORGANIZATIONAL CHART

**Legend**

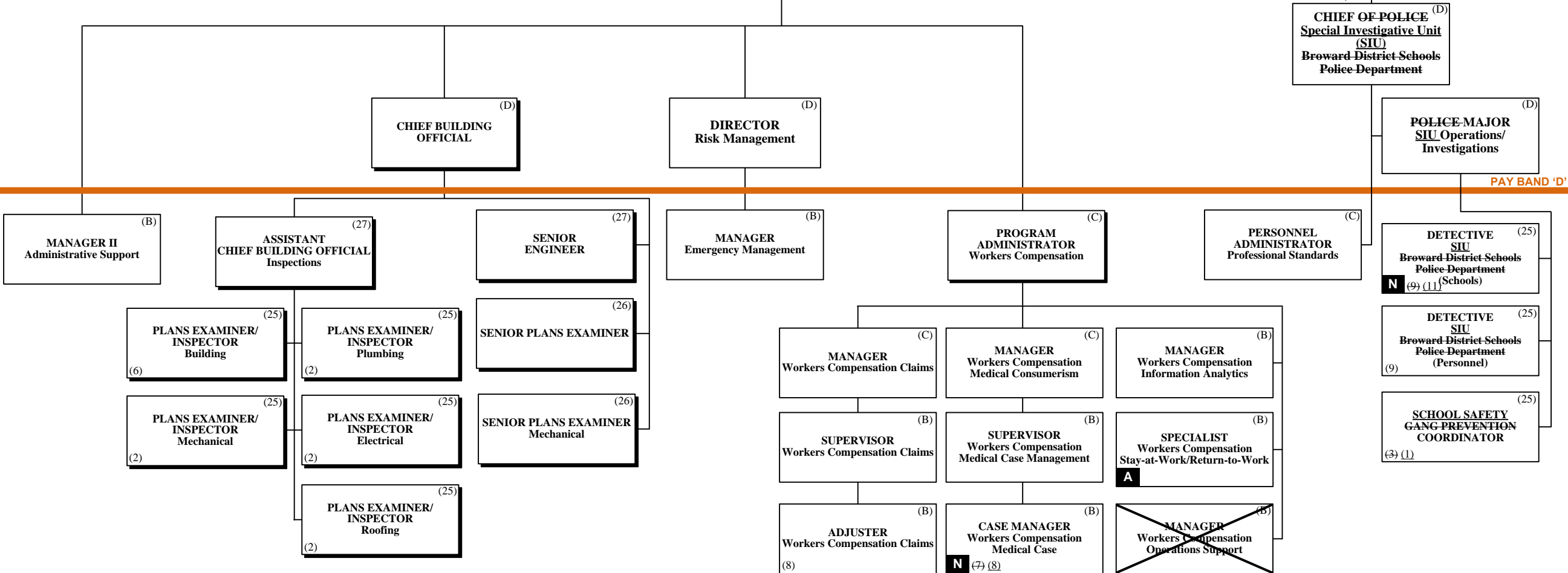
Funding from sources other than General Funds	New Position Job Description Exists <b>N</b>	Reporting Change from Different Division <b>R</b>
New Position Job Description Does Not Exist <b>N</b> ✓	Job Study on Existing Position <b>J</b>	Alignment Change within same Division <b>A</b>
Revision to Existing Job Description/Title Change ✓	Funding: <b>C</b> Capital <b>FS</b> Food Service <u>Direct Report</u> <b>G</b> General <b>Gr</b> Grant <u>Indirect Report</u>	

SUPERINTENDENT OF SCHOOLS

**PROPOSED**

CHIEF OF STAFF (S)

PAY BANDS 'S' & 'E'



PAY BAND 'D'

ESMAB PAY BANDS 'C' & 'B'  
TSP PAY GRADES 25-28



**THE SCHOOL BOARD OF BROWARD COUNTY, FL  
2016-2017 ORGANIZATIONAL CHART  
PROPOSED**

**STRATEGY & OPERATIONS**

THE SCHOOL BOARD OF BROWARD COUNTY, FLORIDA

SUPERINTENDENT OF SCHOOLS

CHIEF STRATEGY & OPERATIONS OFFICER (S)

EXECUTIVE DIRECTOR (E)  
Strategy Implementation & Accountability  
N ✓

PAY BANDS 'S' & 'E'

PRESIDENT/CEO  
Broward Education Foundation

DIRECTOR (D)  
Business Support Center

DIRECTOR (D)  
Grants Administration

EXECUTIVE DIRECTOR (E) (D)  
Enterprise Project Management  
Strategy & Continuous Improvement  
A ✓

DIRECTOR (D)  
Performance Management  
A

DIRECTOR (D)  
Program Evaluation  
N ✓

PAY BAND 'D'

MANAGER (27)  
Budget

BUSINESS ANALYST (27)  
N (+) (2)

SYSTEMS ANALYST IV (26)

SUPERVISOR I (26)  
Printing Services

SENIOR MANAGER (C)  
Grant Programs

MANAGER (26)  
Grant Programs Oversight  
(2)

GRANTS ADMINISTRATOR (25)  
Accountability & Reporting

COORDINATOR (C)  
Performance Management

COORDINATOR (C)  
Strategic Performance Management  
A ✓

EVALUATION ADMINISTRATOR (27)  
A

**Legend**

Funding from sources other than General Funds	New Position Job Description Exists N	Reporting Change from Different Division R
New Position Job Description Does Not Exist N ✓	Job Study on Existing Position ✓	Alignment Change within same Division A
Revision to Existing Job Description/Title Change ✓	Funding: C Capital FS Food Service Direct Report G General Gr Grant Indirect Report	

ESMAB PAY BANDS 'C' & 'B'  
TSP PAY GRADES 25-28



**THE SCHOOL BOARD OF BROWARD COUNTY, FL  
2016-2017 ORGANIZATIONAL CHART  
PROPOSED**

**STRATEGY & OPERATIONS**

**THE SCHOOL BOARD OF BROWARD COUNTY, FLORIDA**

**SUPERINTENDENT OF SCHOOLS**

**CHIEF STRATEGY & OPERATIONS OFFICER (S)**

**Legend**

Funding from sources other than General Funds	New Position Job Description Exists <b>N</b>	Reporting Change from Different Division <b>R</b>
New Position Job Description Does Not Exist <b>N</b> ✓	Job Study on Existing Position <b>J</b>	Alignment Change within same Division <b>A</b>
Revision to Existing Job Description/Title Change ✓	Funding: <b>C</b> Capital <b>FS</b> Food Service <u>Direct Report</u> <b>G</b> General <b>Gr</b> Grant <u>Indirect Report</u>	

PAY BANDS 'S' & 'E'

**DIRECTOR (D)**  
Food & Nutrition Services

**DIRECTOR (D)**  
Procurement & Warehousing Services

**DIRECTOR (D)**  
Student Transportation & Fleet Services

PAY BAND 'D'

**ASSISTANT DIRECTOR (C)**  
Food & Nutrition Services

**SUPERVISOR (B)**  
Resource Computer Training

**AREA SUPERVISOR (B)**  
Food & Nutrition Services (11)

**AREA SUPERVISOR (B)**  
Special Programs Food & Nutrition Services (+) (2)

**COORDINATOR (C)**  
Food & Nutrition Services

**FINANCE MANAGER (C)**  
Food & Nutrition Services

**PROGRAM MANAGER (25)**  
Nutrition, Education & Training

**PURCHASING AGENT (25)**  
Food Service Equipment & Supplies

**MANAGER (C)**  
Strategic Sourcing

**PURCHASING AGENT IV (25)**

**MANAGER (C)**  
Construction Sourcing  
**N** ✓

**PURCHASING AGENT IV (25)**  
Construction  
**A**

**MANAGER (26) (C)**  
Operations & Procurement Compliance  
✓

**SENIOR PROCESS ANALYST (C)**  
**N**

**PROCESS ANALYST (25)**  
Procurement & Warehousing Services (2)

**MANAGER (B)**  
Warehousing Services

**COORDINATOR (26)**  
Supplier Diversity & Outreach

**ASSISTANT DIRECTOR (C)**  
Transportation Support Services

**MANAGER II (C)**  
Transportation Terminal (2)

**SUPERVISOR (25)**  
Special Needs Transportation

**ACCOUNTANT V (27)**

**MANAGER I (B)**  
Transportation Terminal (2)

**MANAGER I (C)**  
Vehicle Maintenance

**SUPERVISOR (25)**  
Vehicle Maintenance

**MANAGER (C)**  
Transportation Operations

**MANAGER (C)**  
Centralized Routing

**DATA ANALYST (25)**  
Transportation

ESMAB PAY BANDS 'C' & 'B'  
TSP PAY GRADES 25-28